

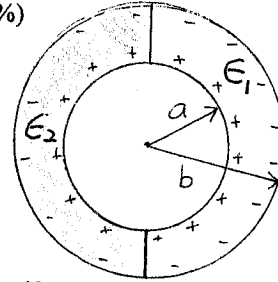
系所別:

大氣物理研究所
水文科學研究所

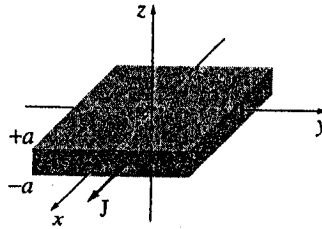
科目:

電磁學

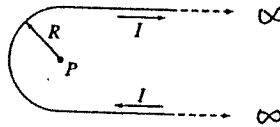
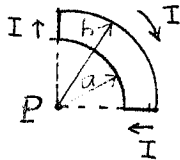
1. The region between two concentric spherical shells is filled with two different dielectrics, as shown in figure. Find the capacitance of the system. (20%)



2. A thick slab extending from $z = -a$ to $z = +a$ carries a uniform volume current $\vec{J} = J\hat{x}$. Find the magnetic field, as a function of z , both inside and outside the slab. (20%)



3. Find the magnetic field at point P for each of the steady current configurations shown in the figure. (20%)



4. State the Maxwell's equations and boundary conditions. (20%)

5. What are : (20%)

- (1) Plane wave
- (2) Poynting vector
- (3) Magnetic dipole moment
- (4) Biot-Savart law

參考用