

國立中央大學 105 學年度碩士班考試入學試題

所別： 物理學系生物物理 碩士班 不分組(一般生)

共 2 頁 第 1 頁

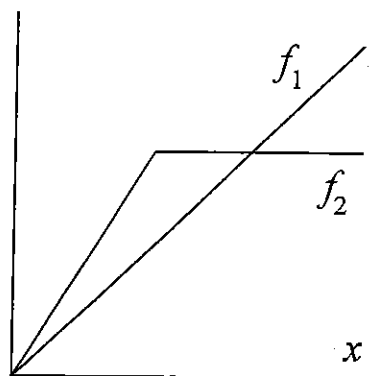
科目： 普通物理

本科考試禁用計算器

*請在答案卷(卡)內作答

1. (10 pts) An object of mass m is thrown from the ground with an initial speed v and with an angle θ relative to the level ground. How far the object will land?

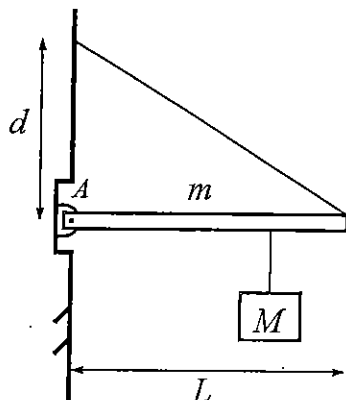
2. (10 pts)



An object is pushed by a force $f_1(x)$ along the x axis as shown in the figure. Plot the work $W_1(x)$ done on the object. Do the same thing for $f_2(x)$.

3. (14 pts) An object of mass m is connected to a spring with spring constant k . Assume that $x = 0$ being the equilibrium position. With the initial condition $x(t = 0) = 1$ and $v(t = 0) = 2$, what is $x(t)$ and $v(t)$? Plot the particle trajectory on the phase plane $v - x$.

4. (14 pts)



An object of mass M is hanging from a bar of mass m and length L , with a distance of $L/4$ from the end. The end of the bar is fixed on the wall by the hinge A which applies no torque. The bar is also suspended by a string as shown. What is the tension of the string? What is the force on the hinge?

5. (10 pts) A bucket is filled with water of 40 cm height. A hole is drilled on the bottom of the bucket. Using Bernoulli's principle, calculate the speed of water just flow out the hole.

注意：背面有試題

國立中央大學 105 學年度碩士班考試入學試題

所別： 物理學系生物物理 碩士班 不分組(一般生)

共 2 頁 第 2 頁

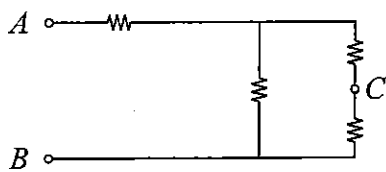
科目： 普通物理

本科考試禁用計算器

*請在答案卷(卡)內作答

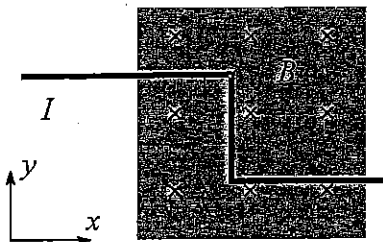
6. (10 pts) A heat engine is adsorbing heat at 1000 W (joule/sec) from a source at temperature 550°K , and dump heat at rate \dot{Q} to its environment at 300°K . If the entropy of the heat engine remains fixed, what is \dot{Q} ? What is the efficiency of the heat engine?
7. (12 pts) A charge $-q$ is located at $(0, 0)$, two charges q located at $(0, 1)$ and $(1, 1)$ respectively. With A at $(1, 0)$ and B at $(1, \frac{1}{2})$, what are the electric fields \vec{E}_A and \vec{E}_B ? What are the electric potential V_A and V_B ?

8. (10 pts)



All the resistors have the same resistance of 100Ω . Assume the voltage $V_B = 3\text{V}$ and $V_A = 10\text{V}$. What is V_C ? What is the current I_C at C .

9. (10 pts)



A region of magnetic field has a size $L \times L$. A wire with current I runs through the region as shown, with the vertical segment at length $L/2$. What is the magnetic force \vec{B} acting on the wire?

注意：背面有試題