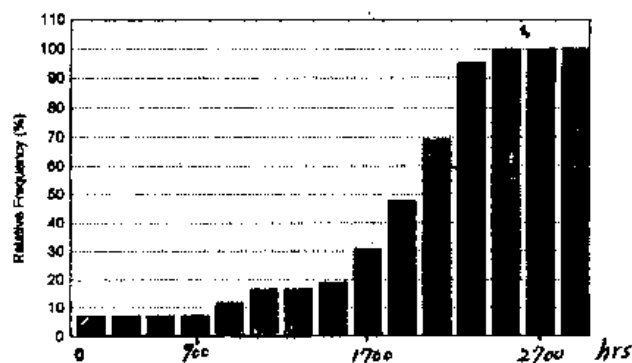


國立中央大學八十六學年度碩士班研究生入學試題卷

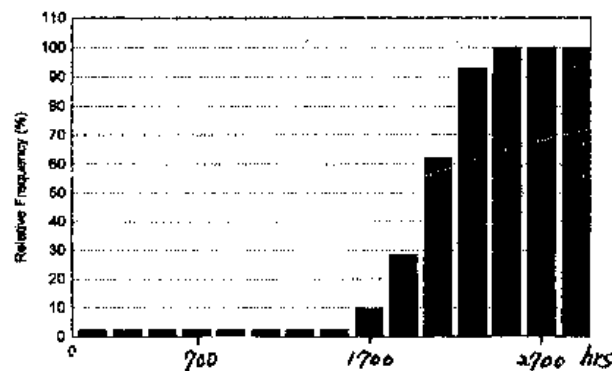
所別: 工業管理研究所甲、乙組 科目: 統計學 共 1 頁 第 1 頁

1. Explain statistical efficiency in plain wording to a person who does not know much about statistics.(10%)
2. The following sample contains 25 numbers of dots in the screen of CRT. What distribution do the data come from most likely?(5%) Why(5%)? How to check your answer?(10%)
data: 1, 2, 1, 2, 3, 0, 3, 2, 6, 4, 0, 7, 0, 1, 2, 1, 3, 3, 9, 8, 7, 2, 4, 7, 5.
3. One manufacturing process has a failure rate less than 0.4. To estimate its failure rate, how many sample do we need to guarantee our estimator having variance less than 0.01.(20%)
4. There are two sets of bulb-life samples from two manufacturing processes. We plot their sample distributions in the following picture. Which one is better(5%) and give your reason(15%).

(a)



(b)



5. In the normal distribution what is the relation between (1) mean and median (5%) (2) 92percentile and 8 percentile (5%)(3) standard deviation and interquantile range(10%).
6. What do you do first when you have a set of data for a random variable?(10%)

參考