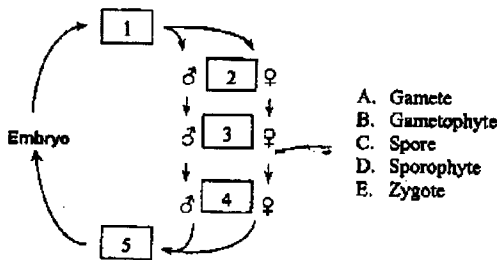


# 國立中央大學九十一年度轉學生入學試題卷

生命科學系 二年級 科目：普通生物學 共 2 頁 第 1 頁

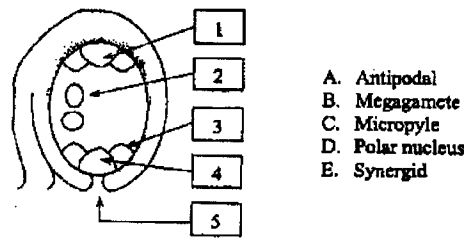
## Plant Biology

**Part I:** There are five boxes numbered from 1 through 5 that are needed to be filled in order to complete the diagram of the plant life cycle. Please match the letters representing the correct terms for each number. (10%)



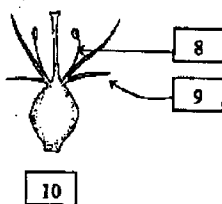
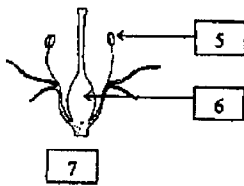
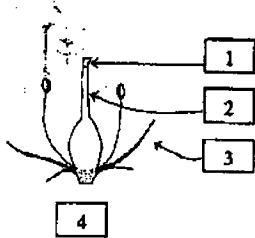
- A. Gamete
- B. Gametophyte
- C. Spore
- D. Sporophyte
- E. Zygote

**Part II:** There are five boxes numbered from 1 through 5 that are needed to be filled in order to complete the diagram of the angiosperm megagametophyte. Please match the letters representing the correct terms for each number. (10%)



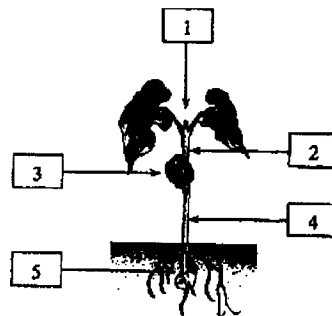
- A. Antipodal
- B. Megagamete
- C. Micropyle
- D. Polar nucleus
- E. Synergid

**Part III:** There are ten boxes numbered from 1 through 10 that are needed to be filled in order to complete the diagram of the plant flowers. Please match the letters representing the correct terms for each number. (20%)



- A. Anther
- B. Epigynous
- C. Filament
- D. Hypogynous
- E. Ovary
- F. Perigynous
- G. Petal
- H. Sepal
- I. Stigma
- J. Style

**Part IV:** There are five boxes numbered from 1 through 5 that are needed to be filled in order to complete the diagram of an angiosperm seedling. Please match the letters representing the correct terms for each number. (10%)



- A. Apex
- B. Cotyledon
- C. Epicotyl
- D. Hypocotyl
- E. Radical

參考用

注意：背面有試題

# 國立中央大學九十一學年度轉學生入學試題卷

生命科學系 二年級 科目: 普通生物學 共 二 頁 第 二 頁

## Zoology and Evolution

Please answer the following questions:

1. Please describe the function of the following organelles or structures: (20%)
  - a) Centriole
  - b) Centrosome
  - c) Bowman's capsule
  - d) Schwann cell
  - e) Sarcomere
2. Compare the following terms (10%)
  - a) Cellular immune response & humoral immune response
  - b) Lymphokines & cytokines
3. What is Hardy-Weinberg principle? What assumptions have to meet for the Hardy-Weinberg principle to be true? (10%)
4. Please describe the hormones secreted by the anterior pituitary gland and the major target organ of each hormone? (10%)

參  
考  
用